

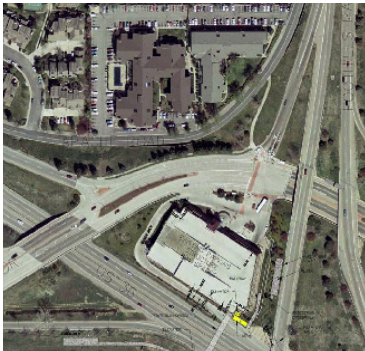
US 36 BUS RAPID TRANSIT



US 36 BRT RAIL LINE FAST FACTS:	
Length (miles):	18
Vehicle Type:	Bus Rapid Transit
Stations:	6**
Parking:	1,278 new parking spaces
Frequency of Service:	2 min (peak)/4 min (off-peak)

**all existing stations





US 36 BRT AT A GLANCE

- US 36 Bus Rapid Transit (BRT) service is part of FasTracks, RTD’s voter-approved multi-year comprehensive plan to expand quality transit service in the Denver metro region.
- The US 36 BRT Line includes 18 miles of proposed BRT service that connects Denver Union Station to Boulder, passing through Westminster, Broomfield, Superior and Louisville.
- Six stations are proposed for the US 36 BRT Line, including Westminster Center, Church Ranch, Broomfield, Flatiron/96th St., McCaslin and Table Mesa.



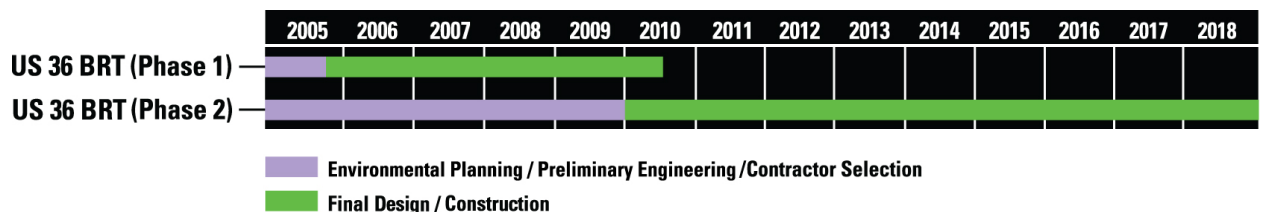
PROJECT OVERVIEW

- The US 36 BRT project began as a single project with two distinct transit elements: the BRT corridor and the commuter rail line from Denver through Boulder to Longmont.
- In 2001, RTD and the Colorado Department of Transportation (CDOT) completed a Major Investment Study (MIS) which evaluated transit alternatives on the US 36 BRT project.
- The Environmental Impact Statement (EIS) for the US 36 BRT began in 2003 with the Record of Decision signed in late 2009.
- In 2006, the rail and BRT corridors split into two separate projects – the Northwest Rail Line and the US 36 BRT project.
- A Final Environmental Impact Statement (FEIS) was released in October 2009, which identified a Preferred Alternative that includes BRT from Denver to downtown Boulder.
- The Phase 1 US 36 BRT project was the first FasTracks project to be completed. The project included a new Park-n-Ride and bus pullouts at Church Ranch Boulevard; new bus pullouts and a pedestrian bridge at McCaslin Boulevard in 2006; and bus pullouts and a pedestrian bridge at the US 36 & Broomfield Park-n-Ride in 2010.
- The design for the Table Mesa Pedestrian Bridge and bus ramps is completed. Construction began in late-2011 and will take 18 months to complete.

LEARN MORE ABOUT THE US 36 BRT PROJECT

For more information, visit rtd-denver.com or call our information line at 303.299.2000.

US 36 BRT LINE SCHEDULE



Schedule consistent with 2010 Financial Plan. Subject to change.

