



Depot Square at Boulder Junction 36 Commuting Solutions

Kate Iverson

Manager, Transit Oriented Development - RTD

November 9th, 2011

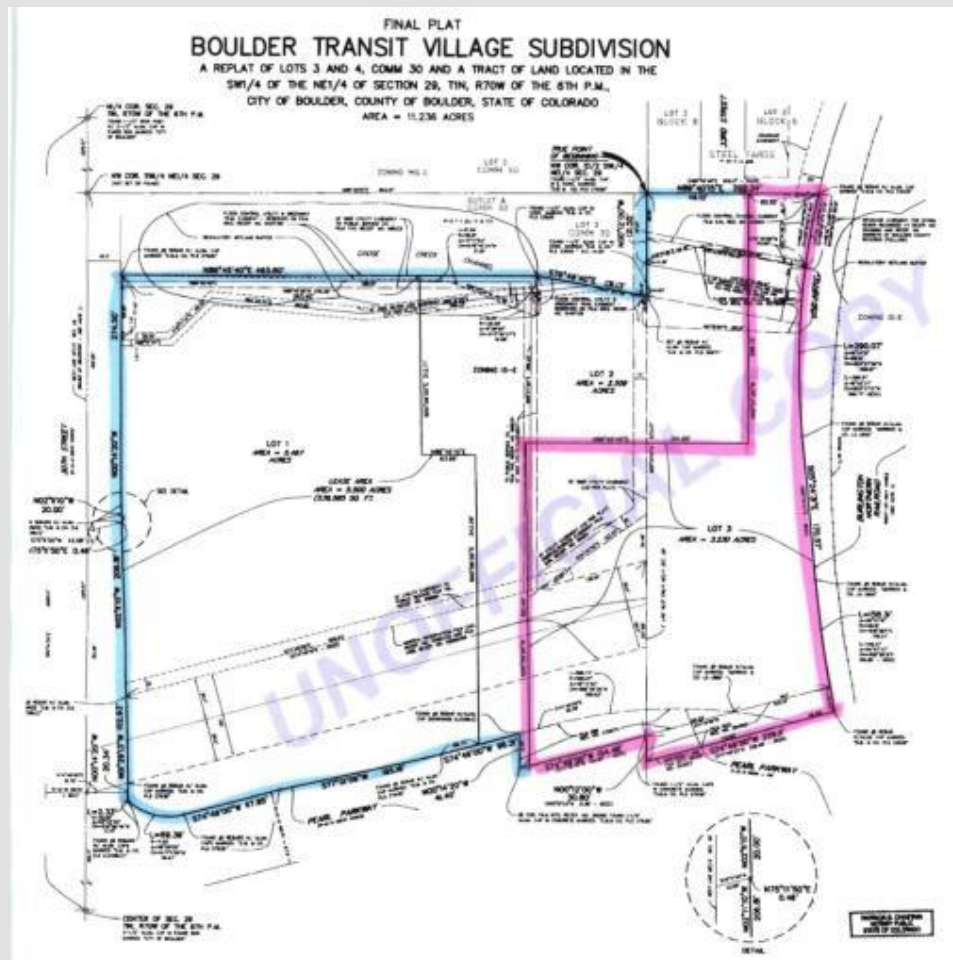
History

- 2003: RTD received a \$7.7 million Congestion Mitigation and Air Quality (CMAQ) grant through the Denver Regional Council of Governments (DRCOG) to construct a bus transfer facility near 30th and Pearl Streets in Boulder. The intent of this facility is to act as an additional high frequency transit hub for the City of Boulder.



History

- 2004: RTD and the City of Boulder jointly purchased 11.2 acres, of which RTD's share of property was 3.23 acres to construct a bus transfer facility. RTD purchased the 3.23 acres for \$ 2.5 million.



History

- 2004- 2007: The City of Boulder conducted an extensive planning process to develop a comprehensive vision for the Boulder Junction area (formerly known as Boulder Transit Village) that included a dense, mixed-use, pedestrian oriented neighborhood which capitalizes on future investments in transit.
- 2007: The City of Boulder and RTD came out with an RFP for the development of a master plan for the full 11.2 acres, including the development of a preferred concept for a bus transfer facility on RTD's 3.23 acres.
- Early 2008 to mid-2009: RTD and the City contracted with EDAW on a site master plan and developed a preferred bus transfer facility concept. During this process Boulder expressed a strong desire to have a bus facility that was integrated with surrounding development.

History: 2008 EDAW Master Plan



EXHIBIT C: PROPOSED LAND USES
 BOULDER TRANSIT VILLAGE: Concept & Site Planning Project
 September 15, 2008

History: 2008 EDAW Master Plan



History

- In mid-2009, RTD was notified by DRCOG that the grant funds awarded in 2003 were in jeopardy if RTD did not procure for construction by September 2010.
- In late 2009, RTD in consultation with the City of Boulder determined that the best course of action was to pursue a design-build procurement for the bus transfer facility with option to include joint development/transit-oriented development (TOD) on RTD's 3.23 acres.
- In September 2010, RTD released an RFP for design-build teams to build a bus transfer facility on RTD-owned land with the option of incorporating joint development in support of the City of Boulder's plan for the area.
- In late winter 2011, RTD staff selected the team of Adolfson & Peterson / Pedersen Development as the preferred bidder, and in September 2011, the RTD Board of Directors approved the award of the Design-Build Contract.

Depot Square at Boulder Junction



Depot Square at Boulder Junction

- 6 bay, below grade bus transfer facility similar to Market Street Station;
- New access road, Junction Place, that connects the RTD transit facility to Pearl Parkway;
- 5 story, 390 space parking garage with 90 RTD parking spaces;
- Public plaza connecting the project elements to each other and the surrounding community;
- 5 story, 140 room hotel with associated retail;
- 71 units of affordable housing



Depot Square at Boulder Junction



Depot Square at Boulder Junction



Depot Square at Boulder Junction



ELEVATION D



ELEVATION E



ELEVATION F



SEH

RTD

DEPOT SQUARE

BUILDING ELEVATIONS

A3.1

Depot Square at Boulder Junction



Depot Square at Boulder Junction



Depot Square at Boulder Junction



QUESTIONS?

Kate Iverson

Manager, Transit Oriented Development

RTD FasTracks Team

303.299.2343

kate.iverson@RTD-Denver.com

